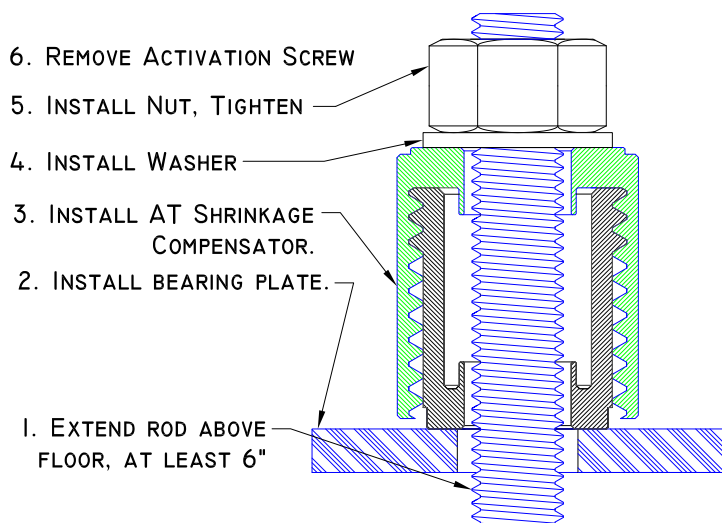




AT Installation, Six Steps, 30 Seconds

Start from the **bottom**, work up.



General Catalog Notes:

Commins Manufacturing Inc. products are designed and tested to provide specified capacities per the referenced code. To achieve specified capacities, products must be properly installed in accordance with catalog information and/or information contained in the shop drawings. Should information be in conflict, shop drawings govern.

1. Commins Manufacturing Inc. reserves the right to change specifications, designs and models without notice or liability for such changes. Consult www.comminsmfg.com for any changes between catalog publication dates.
2. Components and systems shown in this catalog will only achieve stated capacities if the design and installation are per the project requirements and the appropriate code as determined by the engineer (EOR).
3. Wood shrinkage compensation shall be determined by the EOR.
4. Contractor/installer shall verify anchor bolt size, thread pitch and material for correct location per structural plans or AutoTight holdown run layout sheet(s).
5. Anchor bolt shall extend 6" minimum above concrete.

LIMITED WARRANTY

Commins warrants that the Products supplied by Commins will conform to the specifications and design limits set forth in this catalog. Commins warrants that the Products shall be free from defects in material or workmanship under normal use and service. This limited warranty runs for one year from the date this Product is installed. Commins' warranty obligations are limited to the repair or replacement (including labor and materials), of defective parts, or at Commins' option, refund of the purchase price. Contact any Commins Distributor or contact Commins directly at Commins Manufacturing Inc., 960B Guard Street, Friday Harbor, Washington, 98250

IN NO EVENT SHALL Commins BE LIABLE FOR ANY CONSEQUENTIAL OR INCIDENTAL DAMAGES, SUCH AS DAMAGE TO OTHER PROPERTY OR OTHER DIRECT OR INDIRECT CONSEQUENTIAL ECONOMIC LOSS, OR FOR ANY PERSONAL INJURIES, HOWEVER CAUSED. Some states do not allow the exclusion or limitation of incidental or consequential damages, so the above limitation or exclusion may not apply to you.

Customer shall not perform any service adjustments or modifications on Products. Commins shall be released from all obligations under this warranty regarding defects resulting in whole or in part from tampering, from abuse, or from repairs, adjustments or modifications if unauthorized thereunder or if made by unauthorized persons. No warranty extended by Commins shall apply to Products that have failed due to natural wear, accident, neglect, or operation in a manner not prescribed in the installation instructions.

THIS LIMITED WARRANTY IS IN LIEU OF ALL OTHER WARRANTIES, EXPRESS OR IMPLIED, EITHER IN FACT OR BY OPERATION OF LAW, STATUTORY OR OTHERWISE, INCLUDING BUT NOT LIMITED TO ANY EXPRESS OR IMPLIED WARRANTY OF MERCHANTABILITY OR FITNESS FOR PARTICULAR PURPOSES, AND AS SUCH CONSTITUTES THE ONLY WARRANTY MADE WITH RESPECT TO THE PRODUCTS. ALL OTHER WARRANTIES ARE HEREBY EXPRESSLY EXCLUDED.

This limited warranty gives you specific legal rights, and you may also have other rights which vary from state to state.

Abbreviations

A.B.	Anchor bolt per plan or schedule
Alt	Alternate option
ATXX	AutoTight take-up device 75 & 75-2.5 (5/8" or 3/4" rod) 100 (7/8" or 1" rod) 125 (1 1/8" or 1 1/4" rod)
CAT	Commins AutoTight
CN(HS)	Coupler nut (HS are notched)
CNR(HS)	Coupler nut reducer(HS are notched)
Dia	Diameter
DFL	Douglas Fir-Larch
EOR	Engineer of record.
HF	Hemlock Fir
HS	High strength
LXX	Bearing plate, 6x wall only
Min	Minimum
Max	Maximum
N(HS)-XX	Nut (HS have stamp grade ID)
O.B.	On center
R-XX(HS)	Threaded rod, (HS rod is black)
SPF	Spruce-Pine-Fir
STD	Standard strength (STD rod is black)
SYP	Southern Pine
SXX	Bearing plate, 4x or 6x wall
Typ	Typical
TUD	Take Up Device
U.N.O.	Unless noted otherwise
W-XX	SAE Washer
	Rod, Nut & Washer Size
-5	5/8" -9 1-1/8"
-6	3/4" -10 1-1/4"
-7	7/8" -12 1-1/2"
-8	1" -14 1-3/4"